

Spoke Placements

Name

Year group/Placement block.....

Ed Mentor team/Practice Assessor.....

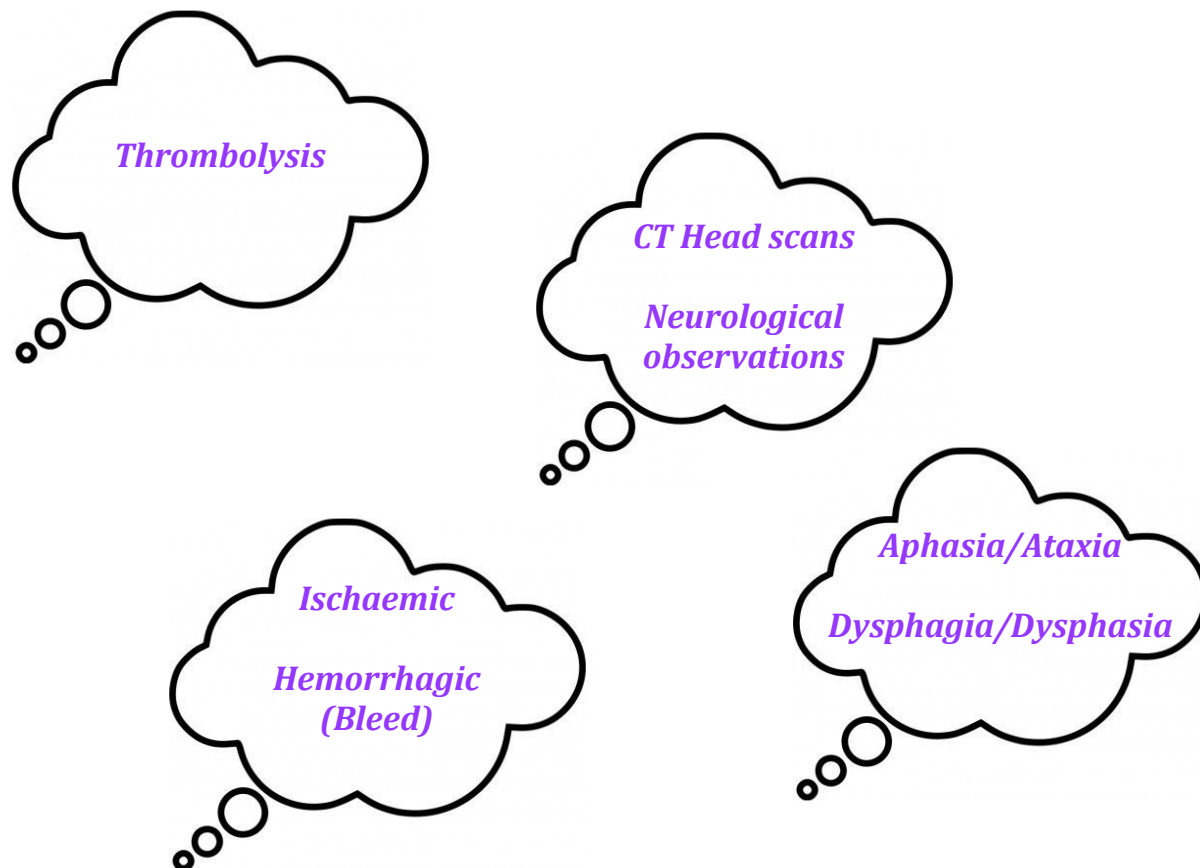
University personal tutor.....

Main PEL: *SR Lydia Jones,*

PBE's: SR Amie Nuttall & CN Chris Proctor

Associate PEL's: CN Luke Hulton (Adults) & Kimberley Walton (Paediatrics)

Acute Stroke Team



Interested?

If you would like to spend some time with the stroke team please use the contact details below to enquire about a *Spoke Placement* opportunity.

Primary Stroke Ward	0161 7782505
Bleep	1010

Mental Health Liaison Team (MHLT/RAID)

*Psychosis
Schizophrenia
Anxiety & Depression
Suicidal Thoughts*

*Community Services
Healthy Minds
Drugs & Alcohol
Liaison*

Safeguarding

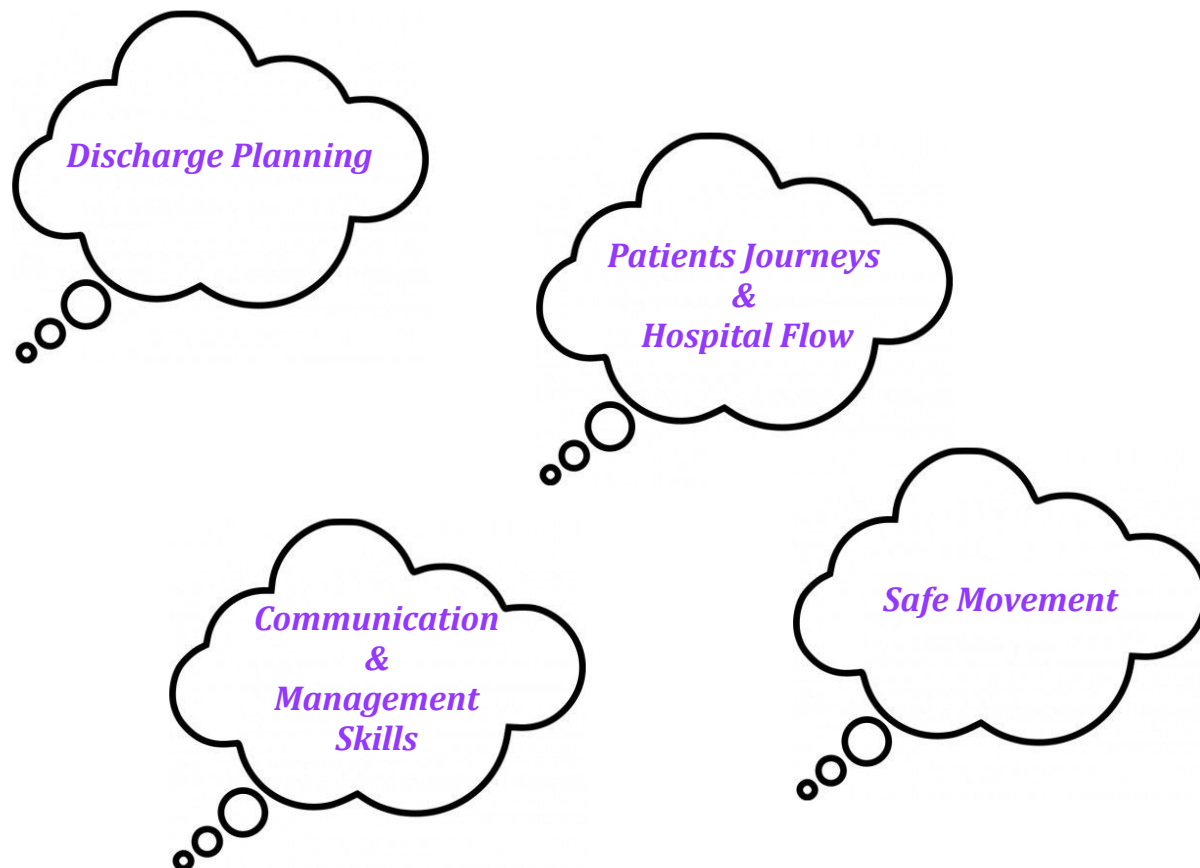
*136 Suite
Mental health
sectioning*

Interested?

If you would like to spend some time with the mental health team please use the contact details below to enquire about a *Spoke Placement* opportunity.

<i>MHLT</i>	0161 7161061
<i>Bleep</i>	5000

Bed Management Team



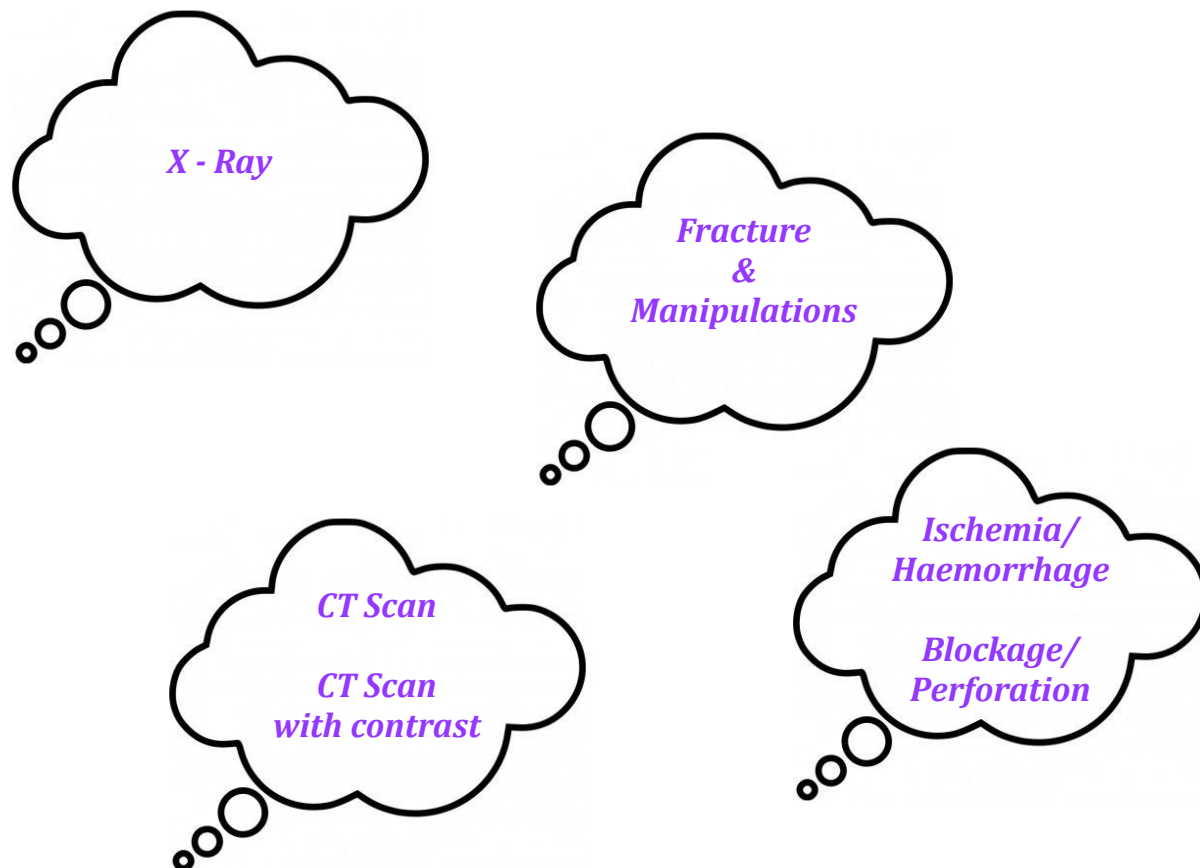
Interested?

If you would like to spend some time with the bed management team please use the contact details below to enquire about a possible *Spoke Placement* opportunity.

Bed management

0161 7782933

Radiology Team

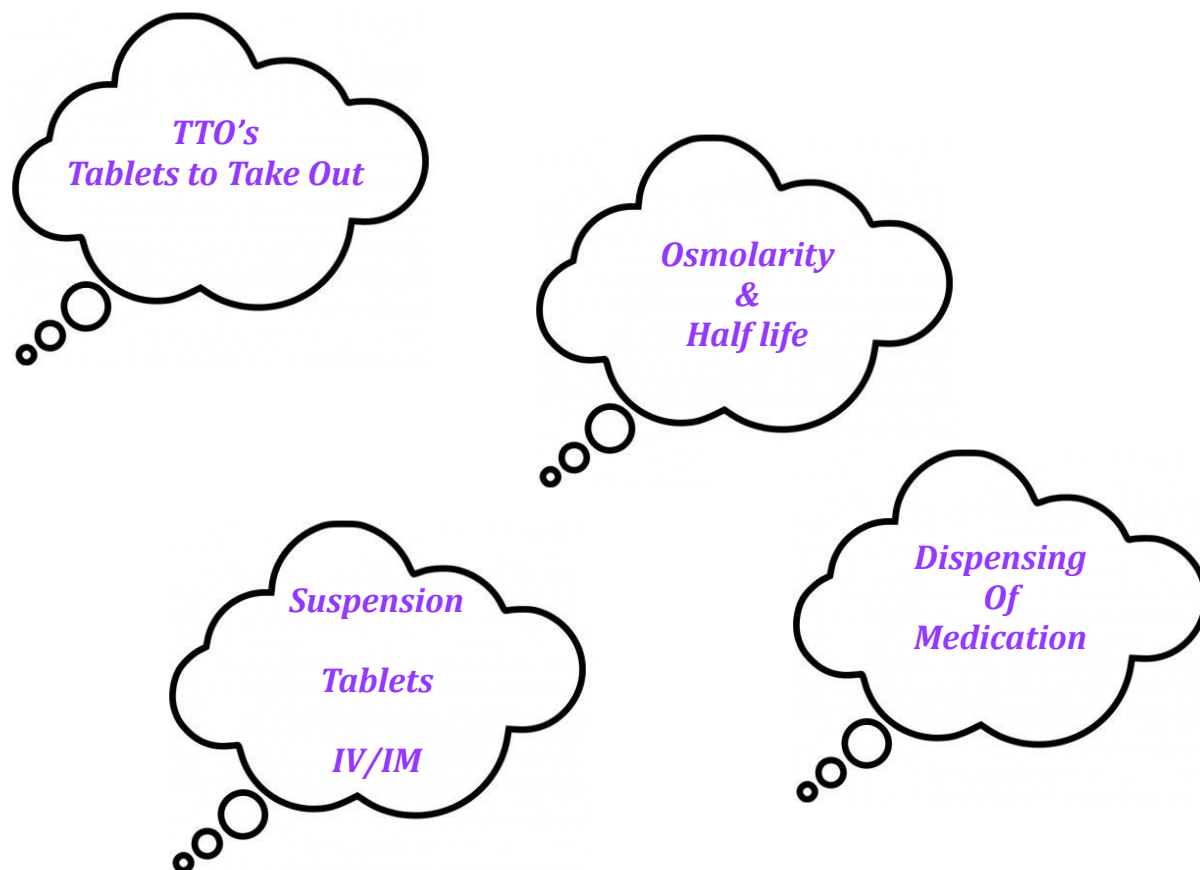


Interested?

If you would like to spend some time with the radiology team please use the contact details below to enquire about a *Spoke Placement* opportunity.

<i>X-Ray</i>	0161 7782771
<i>CT Scan</i>	0161 7788591

Ed Pharmacist



Interested?

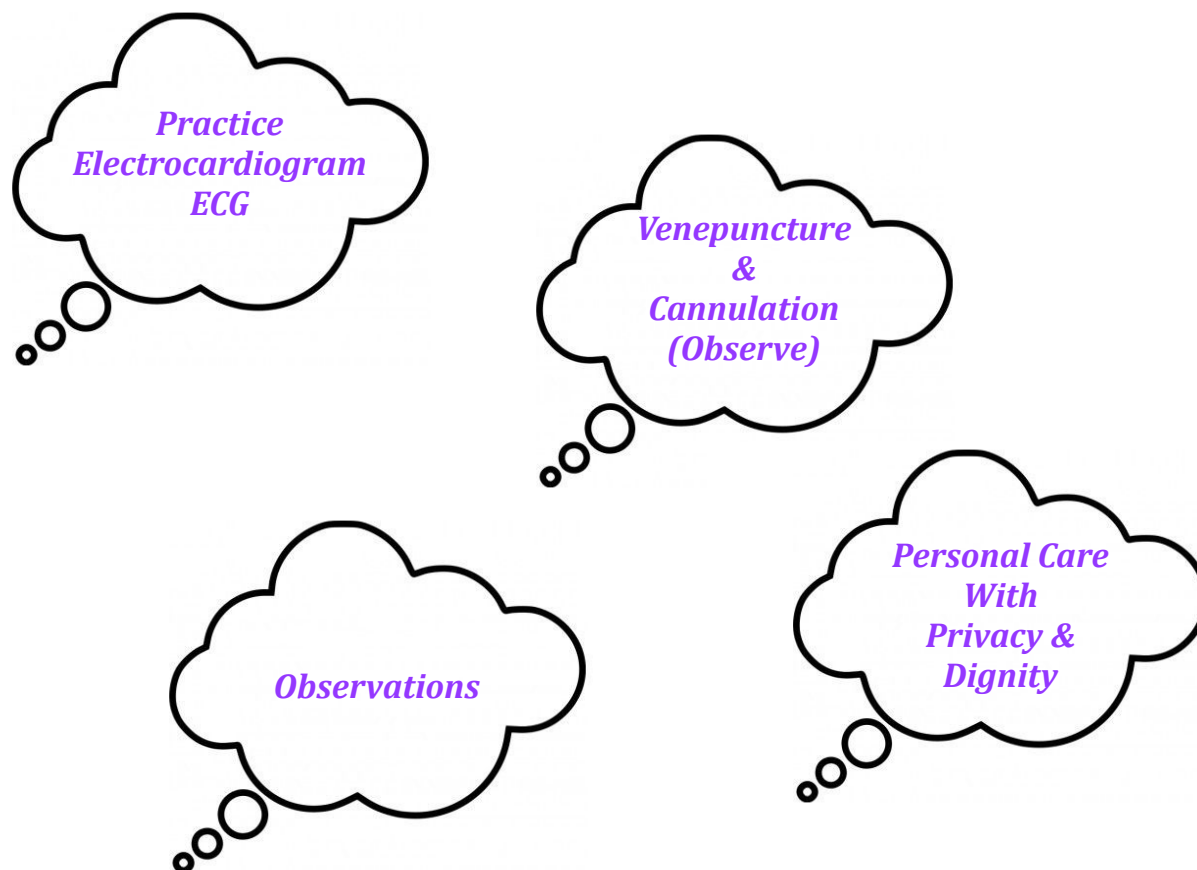
If you would like to spend some time with the Ed pharmacist please use the contact details below to enquire about a *Spoke Placement* opportunity.

Bleep

2477

Time spent with a Health Care Support Worker (HCSW)

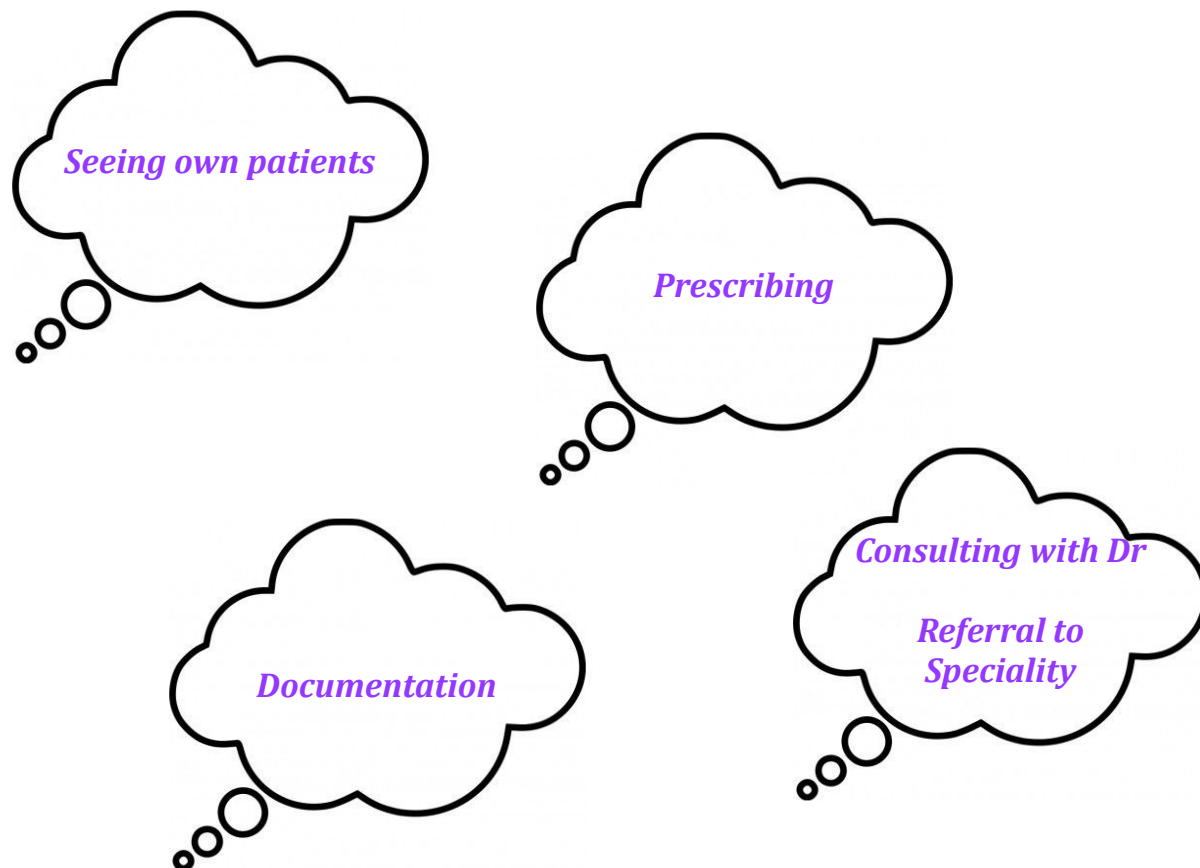
Health Care Assistant (HCA)



Interested?

If you would like to spend some time with a HCSW/HCA please arrange this within the Ed department by approaching one of our HCSW/HCA members of staff to enquire about a *Spoke Placement* opportunity.

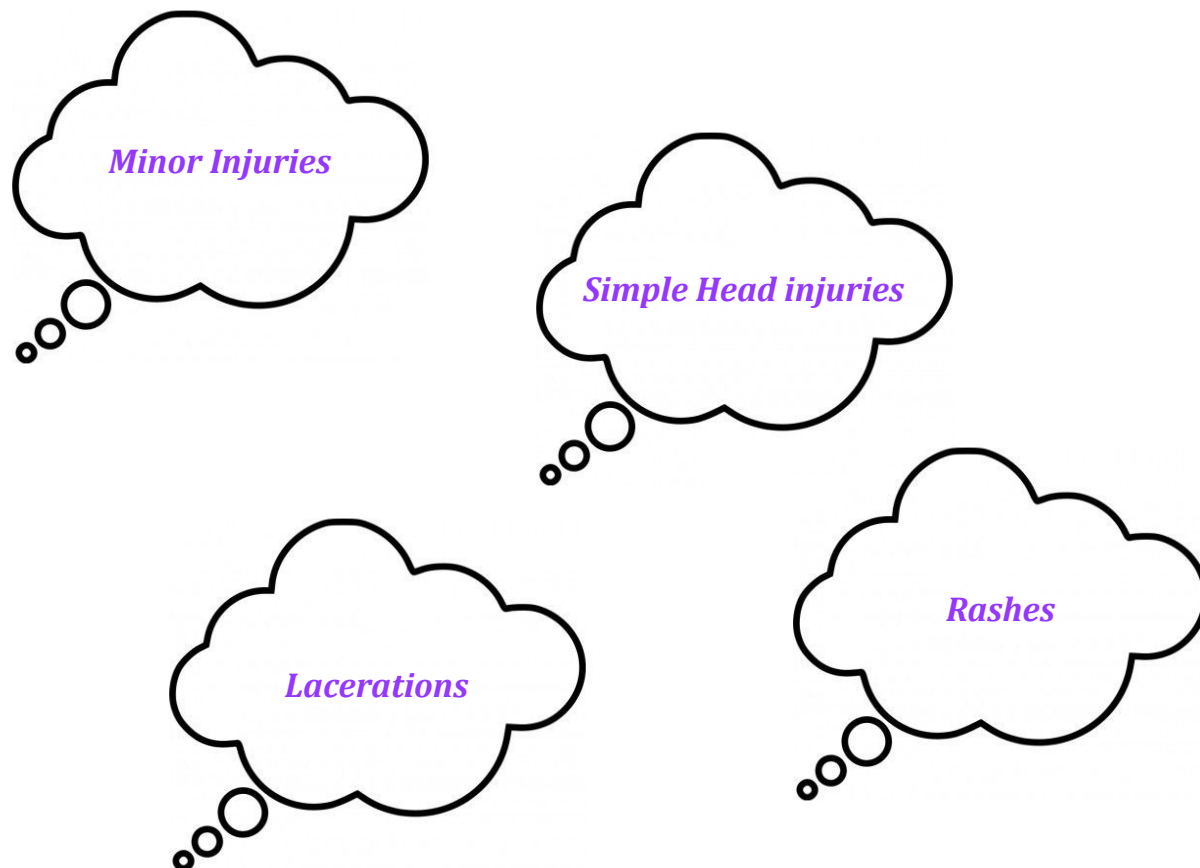
Time spent with an Advanced Nurse Practitioner (ANP)



Interested?

If you would like to spend some time with an ANP please arrange this within the Ed department by approaching one of our ANP members of staff to enquire about a *Spoke Placement* opportunity.

Time spent with an Emergency Nurse Practitioner (ENP)



Interested?

If you would like to spend some time with an ENP please arrange this within the Ed department by approaching one of our ENP members of staff to enquire about a *Spoke Placement* opportunity.

A day with The North West Ambulance Service (NWAS)

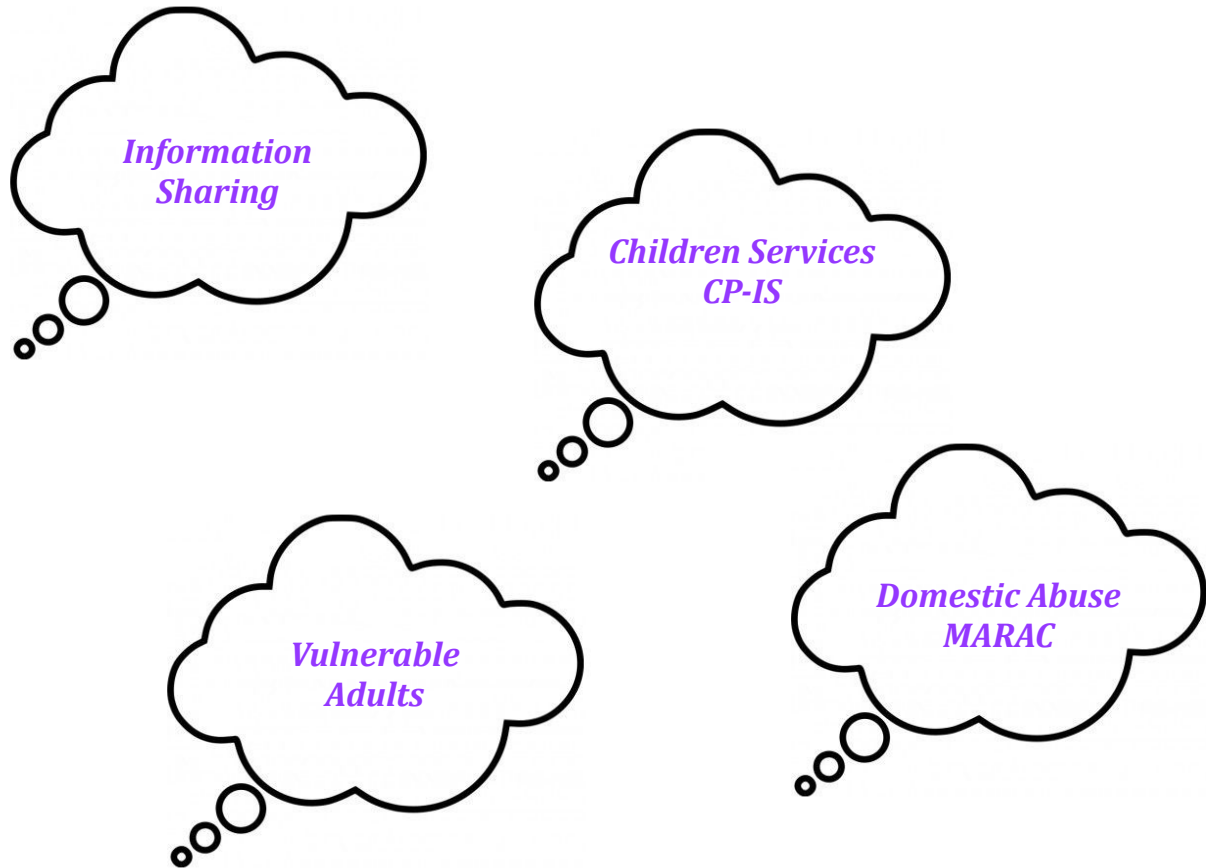


Interested?

If you would like to spend some time with NWAS on a *Spoke Placement* day please arrange this directly through your placement team at university.

Your University Link Lecturer (ULL) or personal tutor should be able to advise you on how to arrange this *Spoke Placement*.

Safeguarding

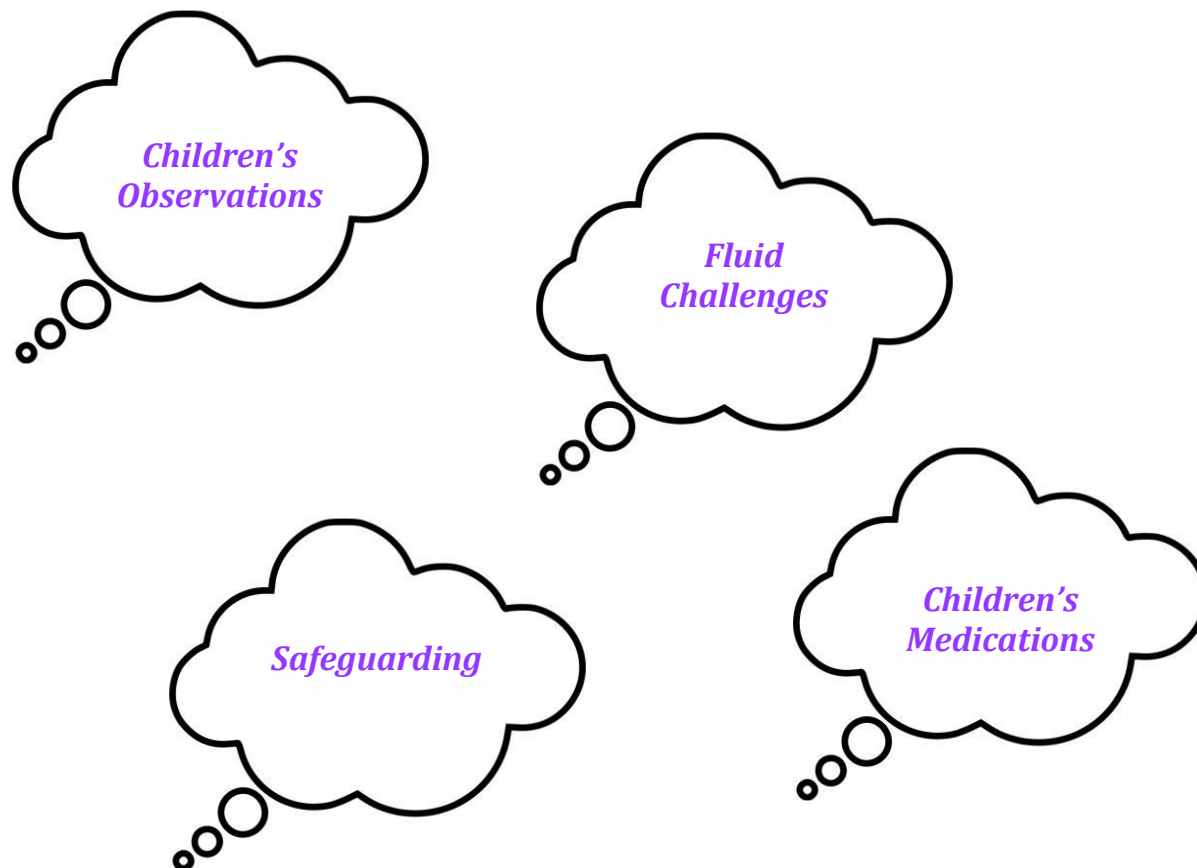


Interested?

If you would like to spend some time with the safeguarding team please use the contact details below to enquire about a possible *Spoke Placement* opportunity.

Andrea Woodcock (A+E SG Lead)

Paediatric Nursing



Interested?

If you would like to spend some time with the paediatric team please use the contact details below to enquire about a possible *Spoke Placement* opportunity.

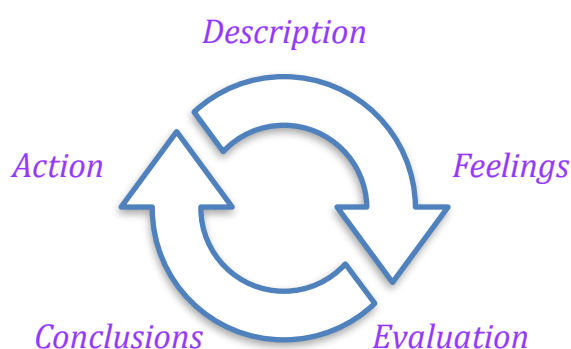
Kimberley Walton

&

Andrea Woodcock (A+E SG Lead)

Reflective Practice

When your *spoke placement* day has come to an end, don't forget to reflect on the days events.



<i>Description</i>	
<i>Feelings</i>	
<i>Evaluation</i>	
<i>Conclusions</i>	
<i>Action</i>	

If you have enjoyed your *Spoke Placements* and wish to learn more you maybe interested in our *Directed Studies* activity which can be found in the Student Resource File & on the Desktop.

Alternatively please feel free to attempt the *A to E Assessment in Action* activity which can be found in the Student Resource File & on the Desktop.