



20-Minute Neighbourhoods

Dr Caglar Koksal, The University of
Manchester

Florence Hewett, Enzygo Ltd

Dr Graeme Sherriff, The University of
Salford

Research questions

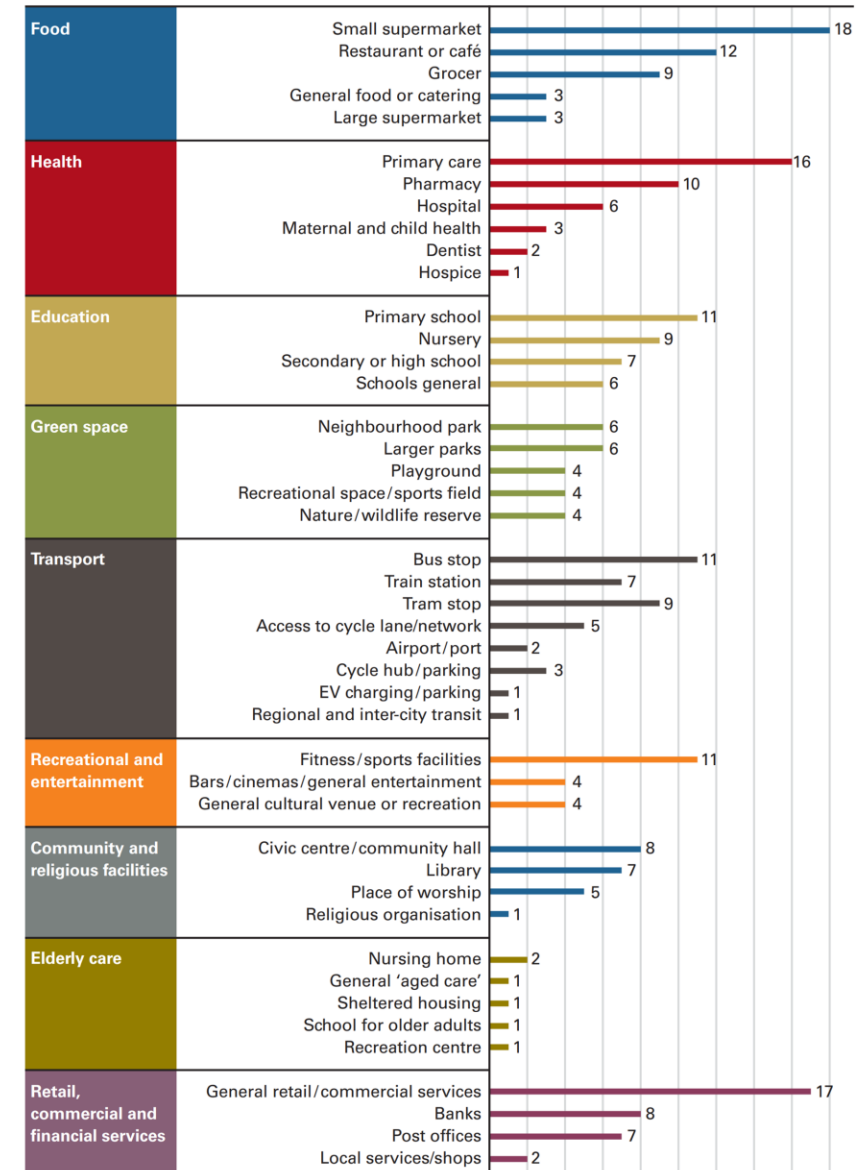
1. What does the literature say about which services and amenities are essential for a 20MN?
2. What did we learn from applying this concept to Manchester and Salford?
3. What do the results tell us about the 20MN concept?

This presentation is based on two articles in Town and Country Planning: March-April and May-June issues

20 Minutes to What?

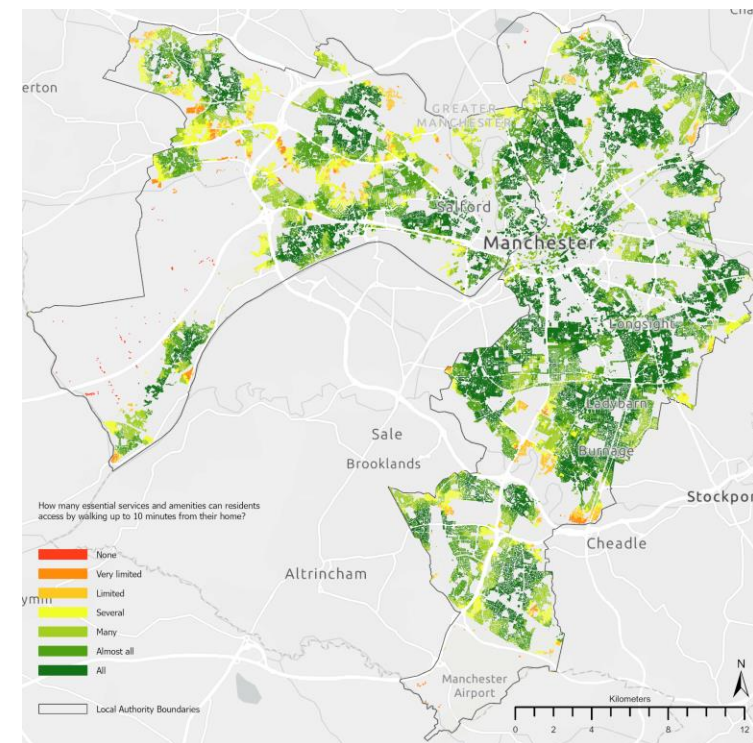
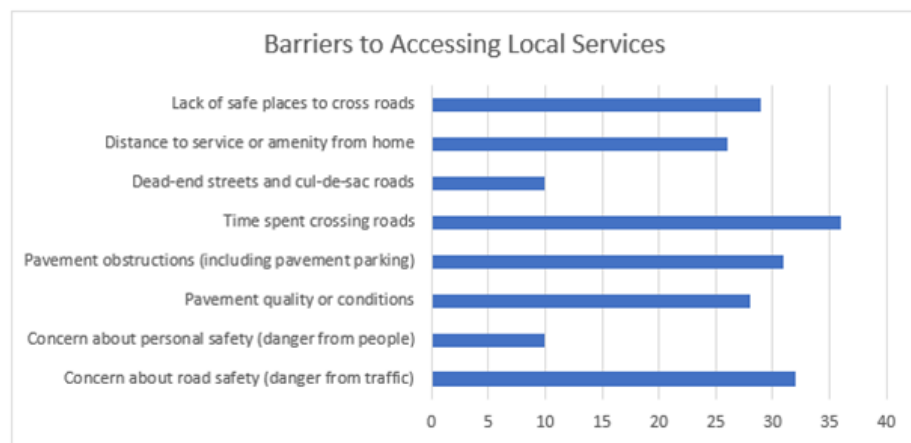
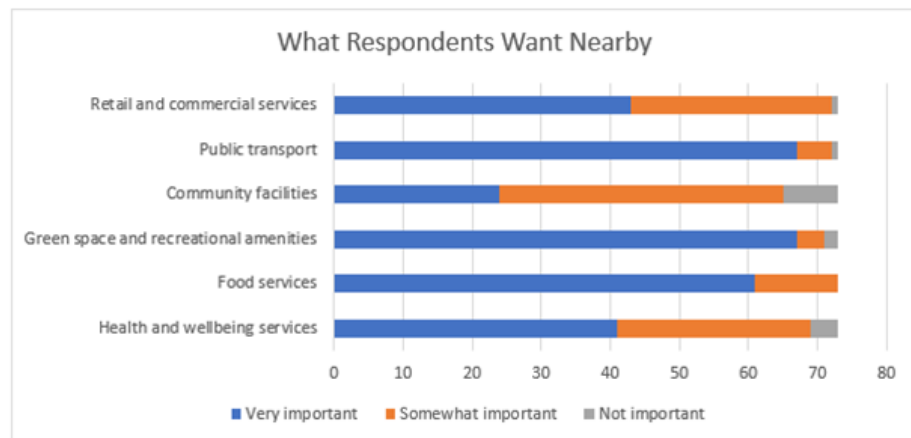
Study origins			Date published		
Australia	4	15.4%	2011	1	3.8%
Canada	1	3.8%	2019	3	11.5%
China	4	15.4%	2021	10	38.5%
Italy	4	15.4%	2022	11	42.3%
Colombia	1	3.8%	no date	1	3.8%
France	1	3.8%			
Italy and UK	1	3.8%			
Spain	1	3.8%			
Spain and UK	1	3.8%			
UK	3	11.5%			
US	4	15.4%			
Belgium, France, China, Canada	1	3.8%			

Table 1
The frequency with which individual services and amenities, arranged by theme, are mentioned in the literature examined



20-Minute Neighbourhood Map of Manchester and Salford

Theme	Ordnance Survey Point of Interest Classification	Coding: if any essential class is missing, then related 'theme' returns score '0', else score '1'. Min score for each household is 0 and max is 6.
Health and wellbeing services	0364 Chemists and pharmacies	Both essential
	0369 Doctors surgeries	
Food services	0661 Bakeries	Min two are essential if below returns zero
	0662 Butchers	
	0667 Frozen foods	
	0669 Grocers, farm shops and pick your own	
	0705 Markets	
	0672 Organic, health, gourmet and kosher foods	
	0819 Supermarket chains	
0699 Convenience stores and independent supermarkets	Min one is essential	
Green space and recreational amenities	0253 Country and national parks	Min one is essential
	0814 Municipal Parks and Gardens, and OS MasterMap Public Parks and Gardens dataset)	
	0453 Allotments	
	0252 Commons	
	0254 Picnic areas	
	0255 Playgrounds	
	0293 Gymnasiums, sports halls and leisure centres	
0302 Sports grounds, stadia and pitches	Min two are essential if above returns zero	
Community facilities	0314 Social clubs	Min one is essential
	0456 Halls and community centres	
	0458 Libraries	
	0447 Sports clubs and associations	
Public transport	0738 Railway stations, junctions and halts	Min one is essential
	0756 Tram, metro and light railway stations and stops	
	0732 Bus stops	
Retail and commercial services	0141 Cash machines	Min one is essential
	0138 Banks and building societies	
	0763 Post offices	
	0685 General household goods	
	0701 Discount stores	
	0708 Shopping centres and retail parks	
0700 Department stores	Min one is essential	



[Live demo link](#)

What do the results tell us about the 20MN concept?



The hyperlocal scale



The limits of the concept



Delivery



Places for living



Thank you for
listening!